

OFFERS IN THE REGION OF

£400,000

Peckham Rye

London, SE15 3JF

**GARETH
JAMES**

PROPERTY SUMMARY

Spanning an impressive 872 sq ft, this well-maintained three double bedroom, two bathroom apartment is neutrally decorated throughout and ideally situated just off Peckham Rye Park.

3



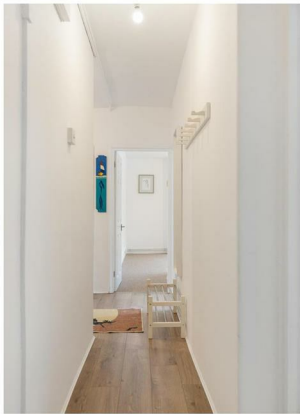
2



1









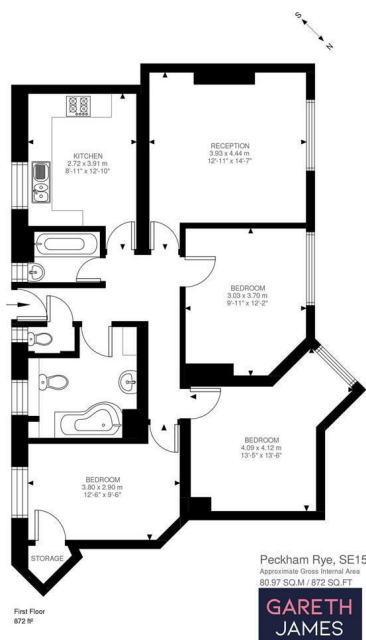
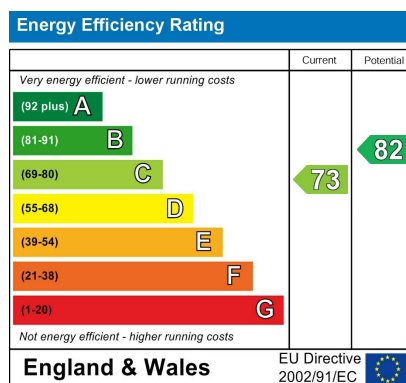
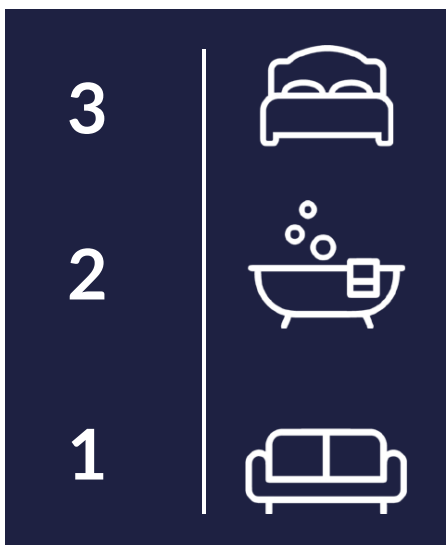


Illustration for identification purposes only. Not to scale.
Floor Plan Drawn According To RICS Guidelines.



Agents Note: Whilst every care has been taken to prepare these particulars, they are for guidance purposes only. All measurements are approximate and are for general guidance purposes only and whilst every care has been taken to ensure their accuracy, they should not be relied upon and potential buyers/tenants are advised to recheck the measurements

GARETH JAMES

OFFICE ADDRESS
129 Bellenden Road
London
SE15 4QY

OFFICE DETAILS
02077324330
sales@garethjames.com
<https://www.garethjames.com/>